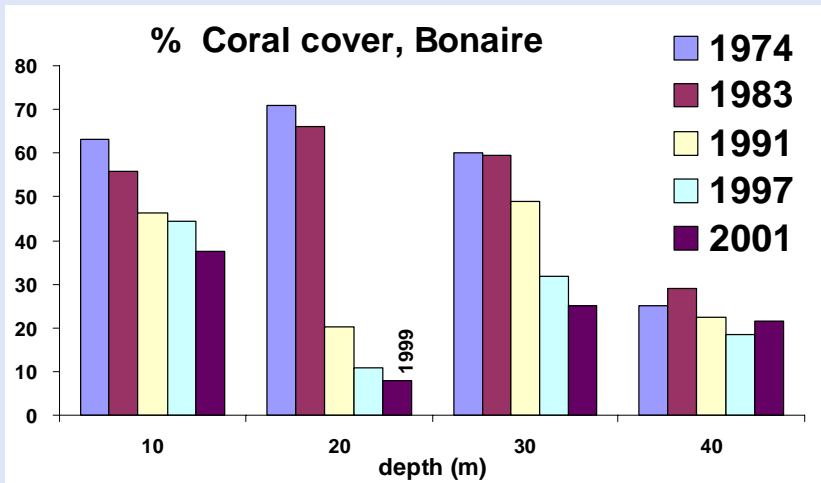




30 years of NIOZ Coral Reef Research



Dramatic changes in coral reefs at Curaçao and Bonaire: Decrease in coral cover from 1974 → 2001

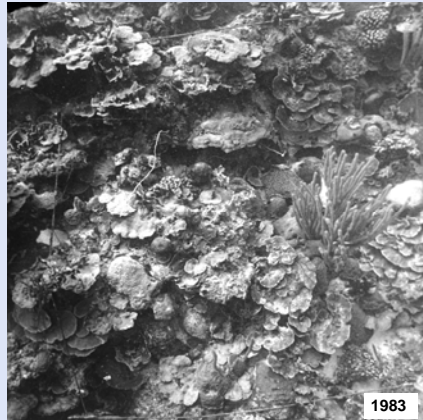


Cover in 1974, 1983, 1991, 1999/2001 at 4 depths: 10, 20, 30 and 40m

Conclusions: a) decrease at 10, 20 and 30m (human impact)
b) no change at 40m

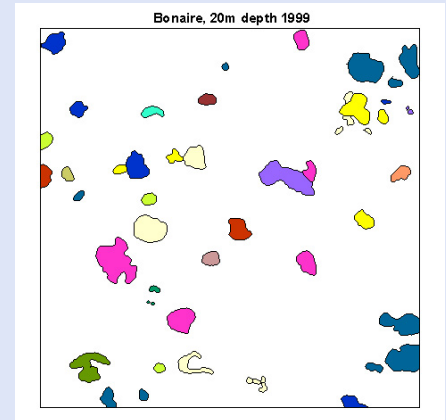
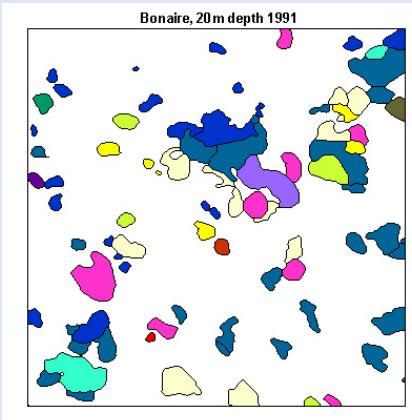
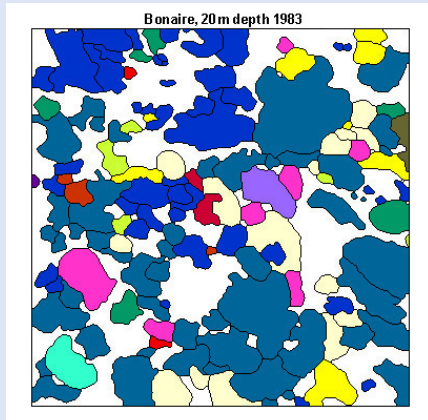
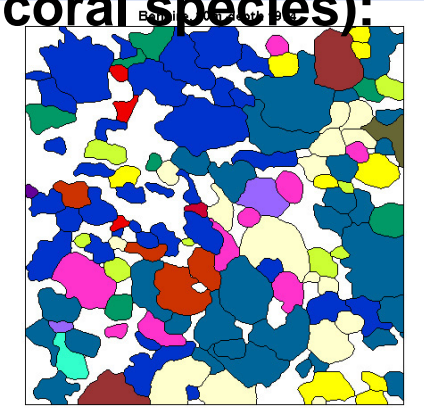
Cover of coral species in permanent quadrates (3X3 meter), over time:

20m

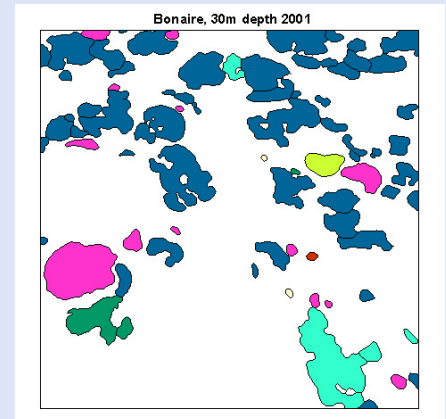
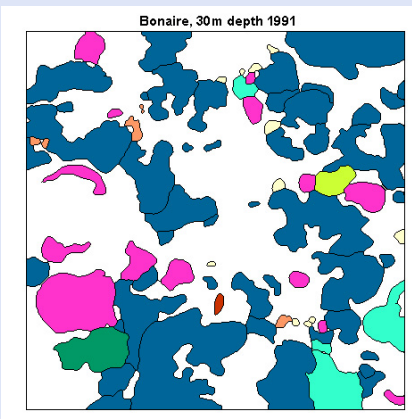
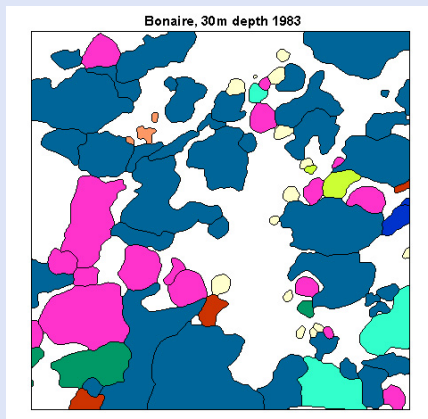
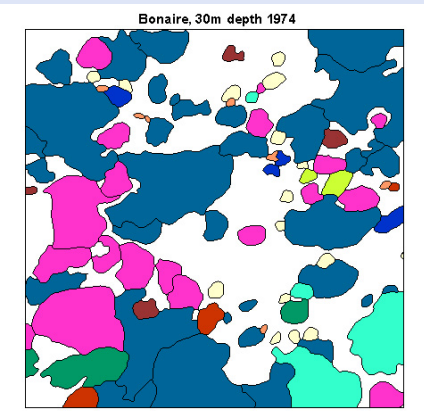


Digitalized pictures from 20m (colour indicates coral species):

20m



30m



Other groups such, as algae, increase in cover and overgrow the coral reef. Causes and results of these processes are the subject of ongoing research

